

ENGINEERING SMART...

Automation Solutions...

Your Partner in Industrial Automation & Motion Control



Simple • Safe • Efficient Automation

SIEMENS

ABB

**MITSUBISHI
MOTORS**

BRANDS WE DEALS



Allen-Bradley

**Schneider
Electric**

 info@risetechsolution.in

 www.risetechsolution.in



+91 8956536317 | +91 9689907340 | +91 9623448599



Sr. No. 46, Kardile mala, Behind Perl Park, Ambad MIDC, Nashik (MH) India 422010

ABOUT US

At Risetech Solutions, We are offering our customers a complete automation solution that provides maximum flexibility and economic efficiency. From customized products to large-scale series production, meeting our customers' needs is our main focus.

Risetech Solutions is a dynamic technology-driven company that provides leading edge automation and motion control solutions to the automotive, packaging, pharmaceutical, research & development, food & beverage industry.

Strict Quality & Safety Standards

Vision

To become a trusted leader in industrial automation and motion control solutions by delivering innovative, precise, and high-quality systems that drive efficiency, safety, and sustainable industrial growth.

Mission

To provide simple and safe solutions to complex industrial challenges through automation by combining advanced engineering, reliable technology, quick service, and a customer-focused approach.



Industrial automation solutions designed for performance and reliability.

WHY CHOOSE US

Trusted Industrial Automation & Engineering Experts

Experienced Automation Engineers



Highly skilled automation & instrumentation engineers with industry expertise.



Complete Automation Solutions

End-to-end services from system design to commissioning.



PLC, SCADA & Motion Control

Advanced expertise in PLC, SCADA, HMI & motion control systems.



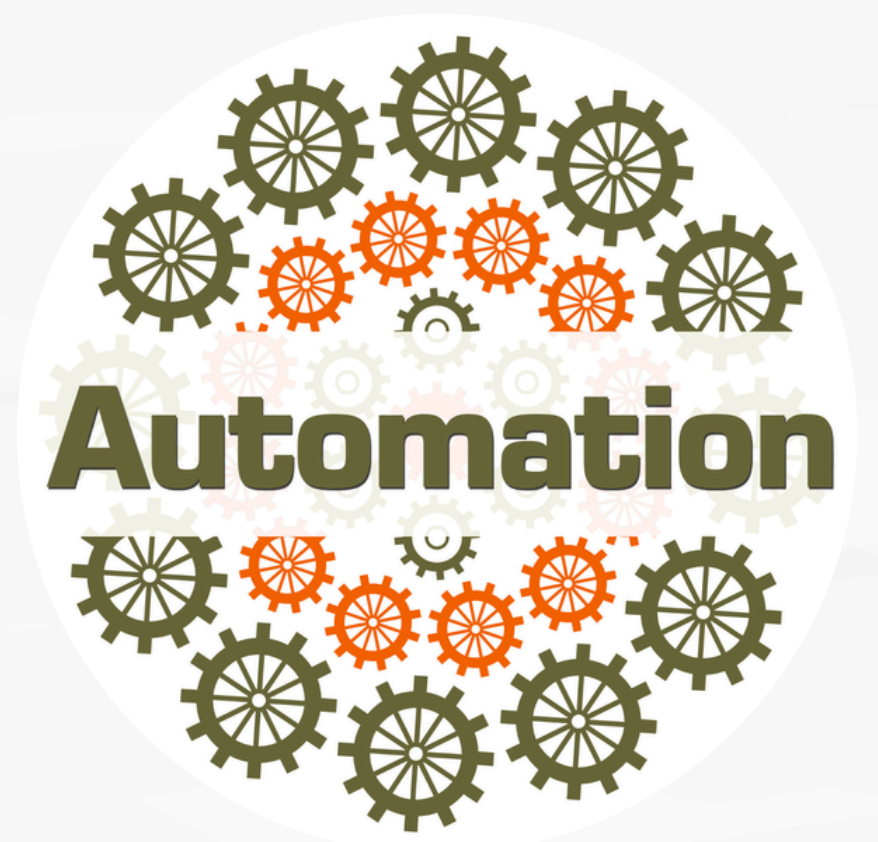
Safe & Cost-Effective Approach

Simple, secure, and optimized automation solutions.



Quick Service & Reliable Support

Minimal downtime with fast response and dependable support.



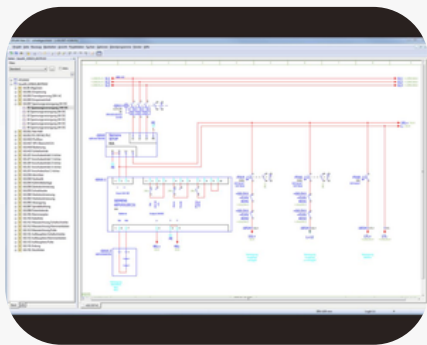
"Quick Service is our main motto"

OUR PRODUCTS

We trade quality industrial products and deliver reliable manufacturing solutions of Industrial Automation & Engineering Solutions

- **S7-200 SMART EXPANSION MODULE**
- **SIEMENS SIMATIC S7-200 SMART**
- **SIEMENS SINAMICS V20 (0.5HP TO 40HP)**
- **FPBA - 01 ABB MAKE**
- **RPBA-01 ABB MAKE**
- **ABB VFD (0.5HP to 200HP)**
- **ET200SP EXPANSION MODULE**
- **SIEMENS SINAMICS CONTROL UNIT CU320**
- **SIEMENS SINAMICS CONTROL UNIT CU320**
- **SIEMENS SINAMICS S120 MOTOR MODULE**
- **SIEMENS SINAMICS G120 POWER MODULE PM240-2 (0.5HP to 200HP)**
- **SIEMENS S7-1500 CPU (PLC)**
- **SIEMENS S7 - 1200 CPU (PLC)**
- **PROFINET CABLE**

OUR SERVICES



Designing (EPLAN & CAD)

We are experts in EPLAN & CAD . Electrical design includes functional specifications, single line & multiline diagrams. We create and modify the design according to the customer's requirements and deliver within time

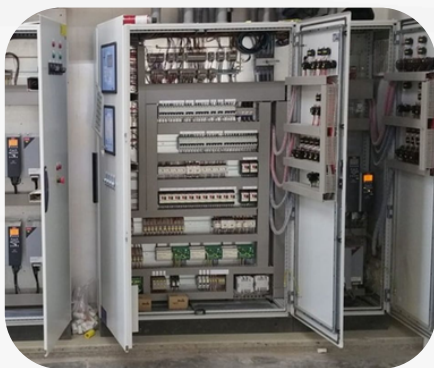
- Functional specifications based on process & control philosophy
- Single Line Diagrams (SLD) for power distribution systems
- Multiline / wiring diagrams for control panels
- Control circuit design for MCC, PCC, PLC & VFD panels



Panel Manufacturing

We design & manufacture all types of PLC panels, VFD panels & MCC panels that have the capacity to feed sufficient loads, designed as per clients' specifications and complying to IS/IEC Standard

- MCC, PCC, LT & Power Distribution Panels
- PLC Automation & VFD Control Panels
- Custom-built panels as per client specifications
- Panel wiring, assembly & internal testing



Site Installation

Installation of the new automation system with minimum time is our top priority to complete the commissioning on time. Our installation team is always ready to meet the customer's demand regardless of the project size and complexity

- PLC Programming
- Panel Positioning & Mounting
- Cable Termination
- Testing & Commissioning
- Handover & Support



Software

RISETECH SOLUTIONS develops PLC programs and designs SCADA/HMI as per the customer requirements with our expertise in software development. Our team makes sure that all systems of the industrial plant are commissioned according to the operational requirements of the customer

- PLC Programming
- HMI / SCADA Development
- Drive & Instrument Integration
- On-Site Commissioning
- Optimization & Support
- Factory Acceptance Testing



Troubleshooting

We provide the solution to the customer to get back the system to working condition with minimum breakdown time, so the production loss will be minimized

- Fault Diagnosis
- Electrical & Control Issues
- PLC & Software Errors
- Drive & Instrument Faults
- Corrective Action
- System Stabilization

OUR PROJECTS

- Coal Handling Plant, Nashik Eklahare
- Wagon Tippler Commissioning With Siemens Plc & G120 Vfd, Nashik Eklahare
- Data Collection System At Bosch Ltd Nashik
- Supply & Commissioning Of Plc & Scada System For Tirumala Irrigation Plant, Hyderabad
- Development & Commissioning Of Dairy Plant At Dhule
- Supply & Commissioning Of Plc & Scada For Acem Mill, Drdo Nasik
- Supply & Commissioning Of Plc & Scada For Fluid Energy Mill At Acem-Drdo Nasik
- Hot Water System At Acem-Drdo Nasik
- Replacement Of Simotion Drive With 4 Axis At Itc Pune
- Supply & Commissioning Of Plc Panel For Basement Ventilation System At Saibaba Hospital, Nashik

INDUSTRIES WE SERVED



Steel Industry



Packaging Insustry



Pharma Industry



R & D



Dairy Industry



Food & Beverage



Process Industry



Process Industry



Mining Industry

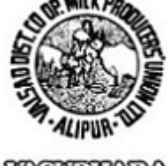


Chemical Industry

OUR VALUABLE CLIENTS



Saurashtra
Cements Ltd.



Synergetic Automation Pvt. Ltd.

